

Falls in Lancashire's 65+ population – *Overview*

Farha Abbas

Business Intelligence

15 July 2015

Population aged over 65 years

District	Total population	65+ pop.	65 plus as % of total pop.	Compared to England
Burnley	87,291	15,552	18%	No significant difference
Chorley	111,607	20,904	19%	Significantly above
Fylde	77,042	20,081	26% ●	Significantly above
Hyndburn	80,208	14,135	18%	No significant difference
Lancaster	141,277	27,378	19%	Significantly above
Pendle	89,840	15,847	18%	No significant difference
Preston	140,452	20,321	14%	Significantly below
Ribble Valley	58,091	13,047	22% ●	Significantly above
Rossendale	69,168	11,980	17%	No significant difference
South Ribble	109,077	21,740	20%	Significantly above
West Lancashire	111,940	23,246	21%	Significantly above
Wyre	108,742	28,698	26% ●	Significantly above
Lancashire	1,184,735	232,929	20%	Significantly above
ENGLAND	54,316,618	9,537,708	18%	

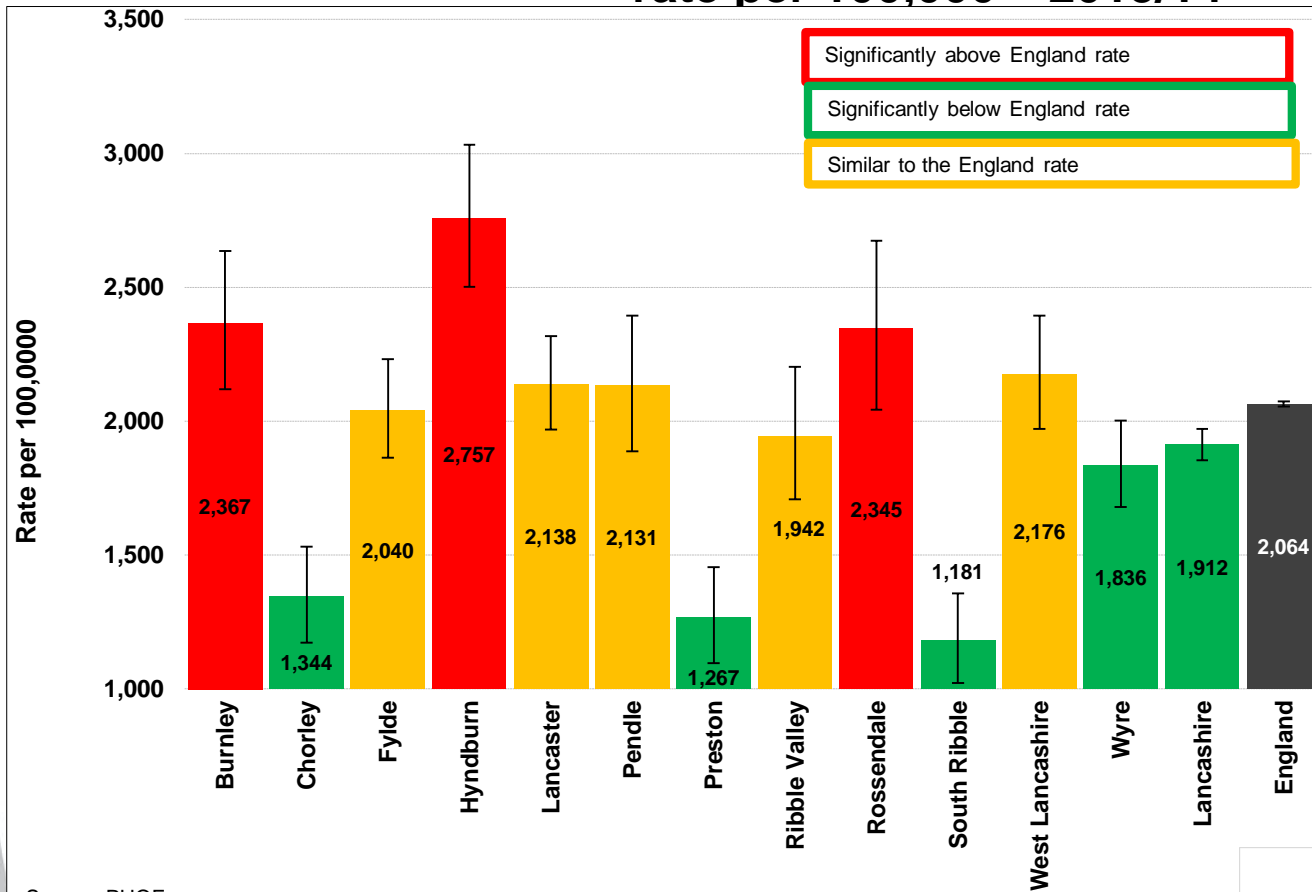
Source: ONS, Mid 2014 estimate

Projections

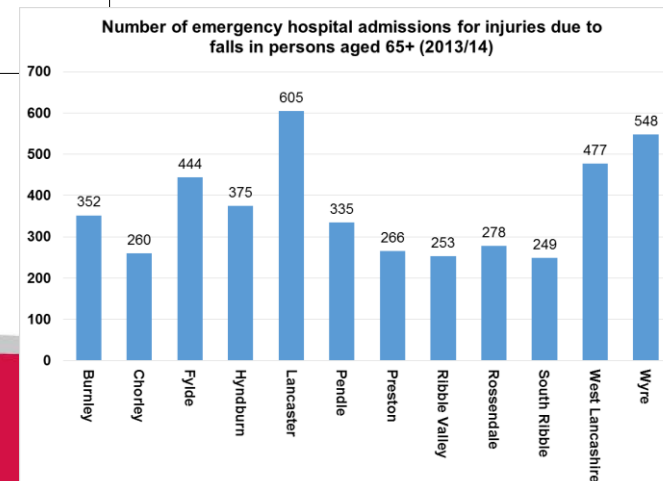
	2014	2015	2020	2025	2030
Lancashire: Total population aged 65 and over predicted to have a fall	61071	62356	68648	75819	85381
Lancashire: % increase in population aged 65 and over predicted to have a fall		2%	12%	24%	40%
Lancashire: Total population aged 65 and over predicted to be admitted to hospital as a result of falls	4,717	4,815	5,462	6,356	6,985
Lancashire - % increase in population aged 65 and over predicted to be admitted to hospital as a result of falls		2%	16%	35%	48%

Source: Projecting Older People Population Information

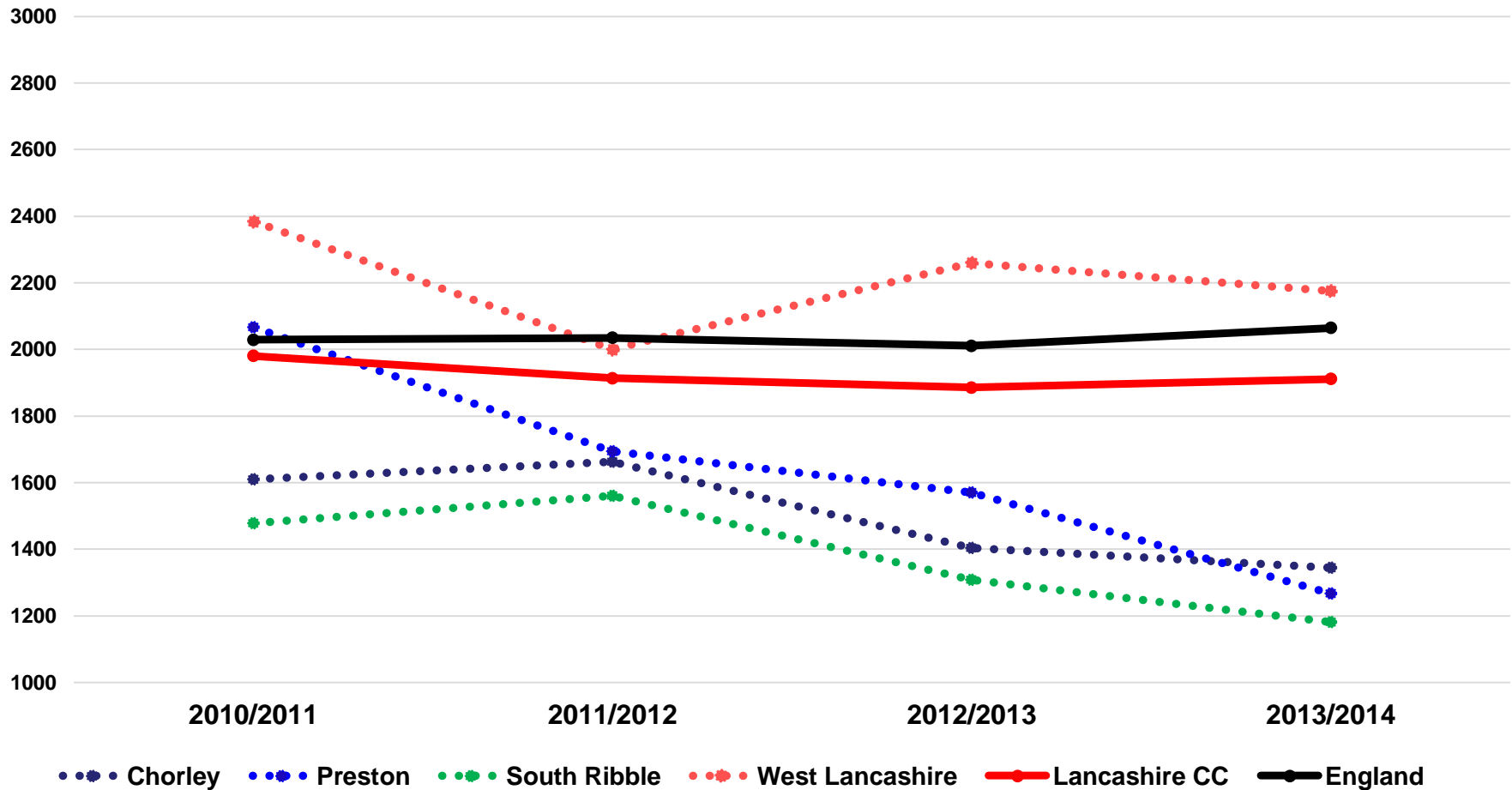
Emergency hospital admissions for injuries due to falls in persons aged 65+, rate per 100,000 – 2013/14



Source: PHOF

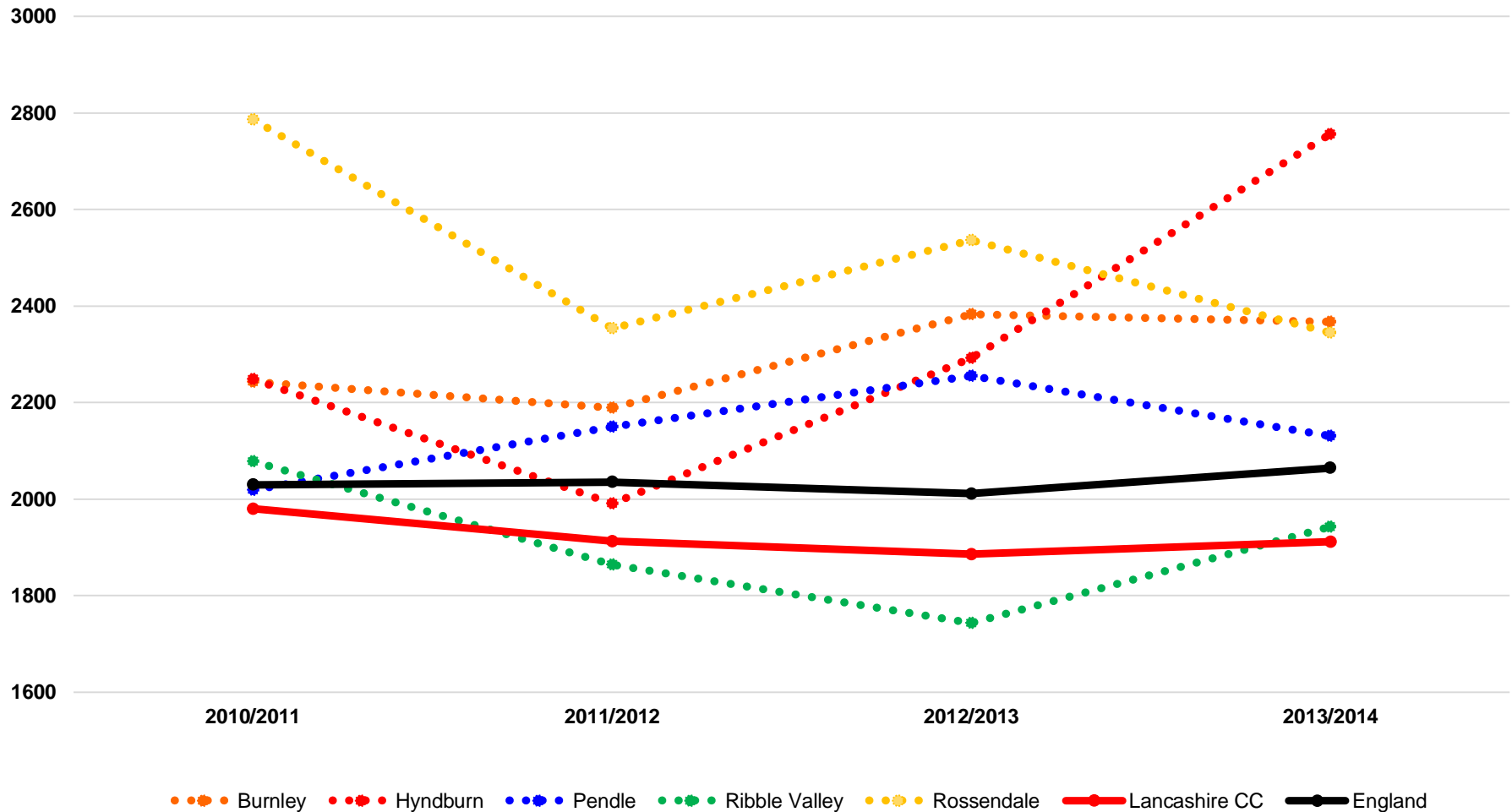


Trend in emergency hospital admissions for injuries due to falls in people aged 65 years and over, rate per 100,000 (Central)



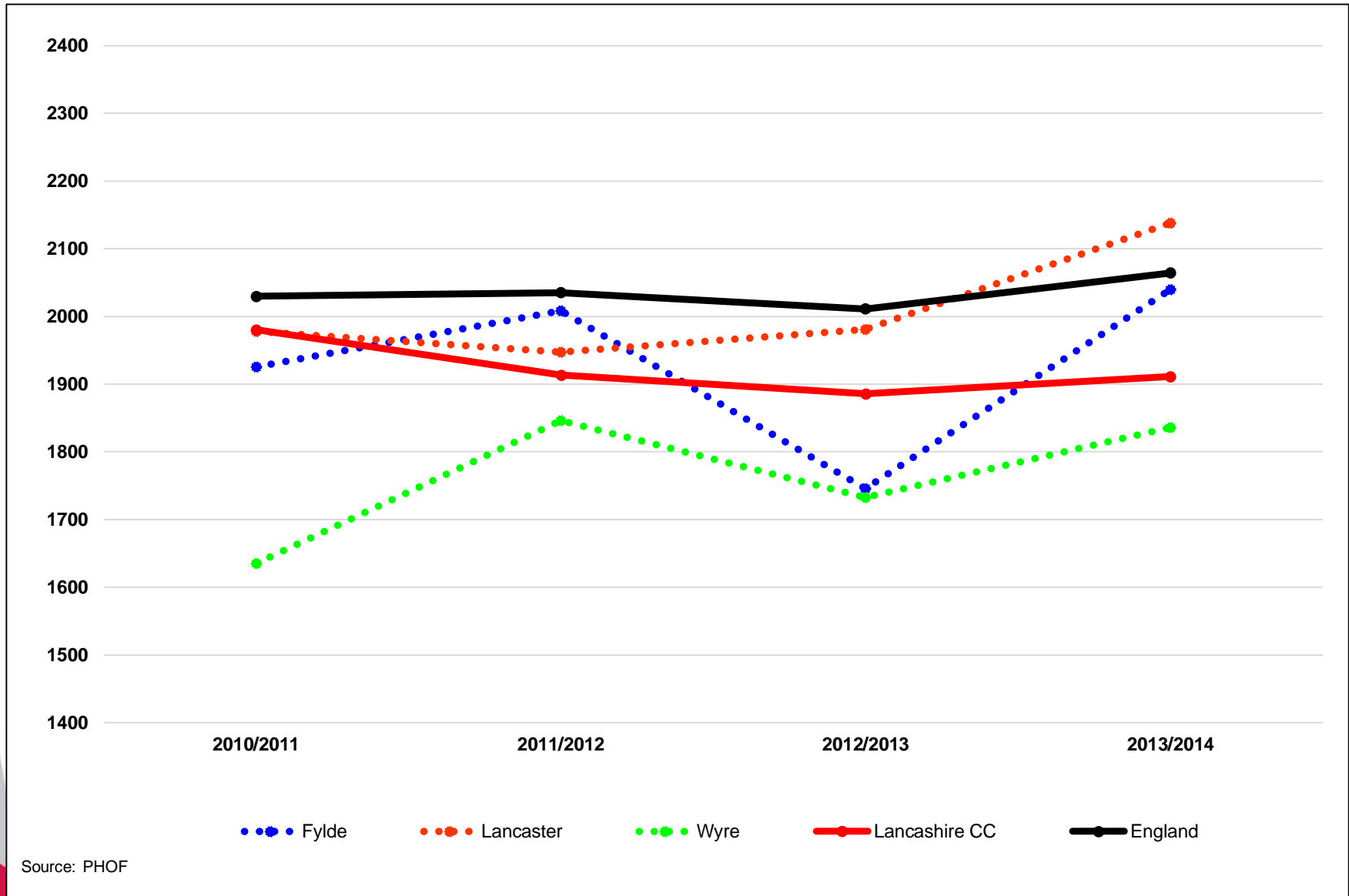
Source: PHOF

Trend in emergency hospital admissions for injuries due to falls in people aged 65 years and over, rate per 100,000 (East)



Source: PHOF

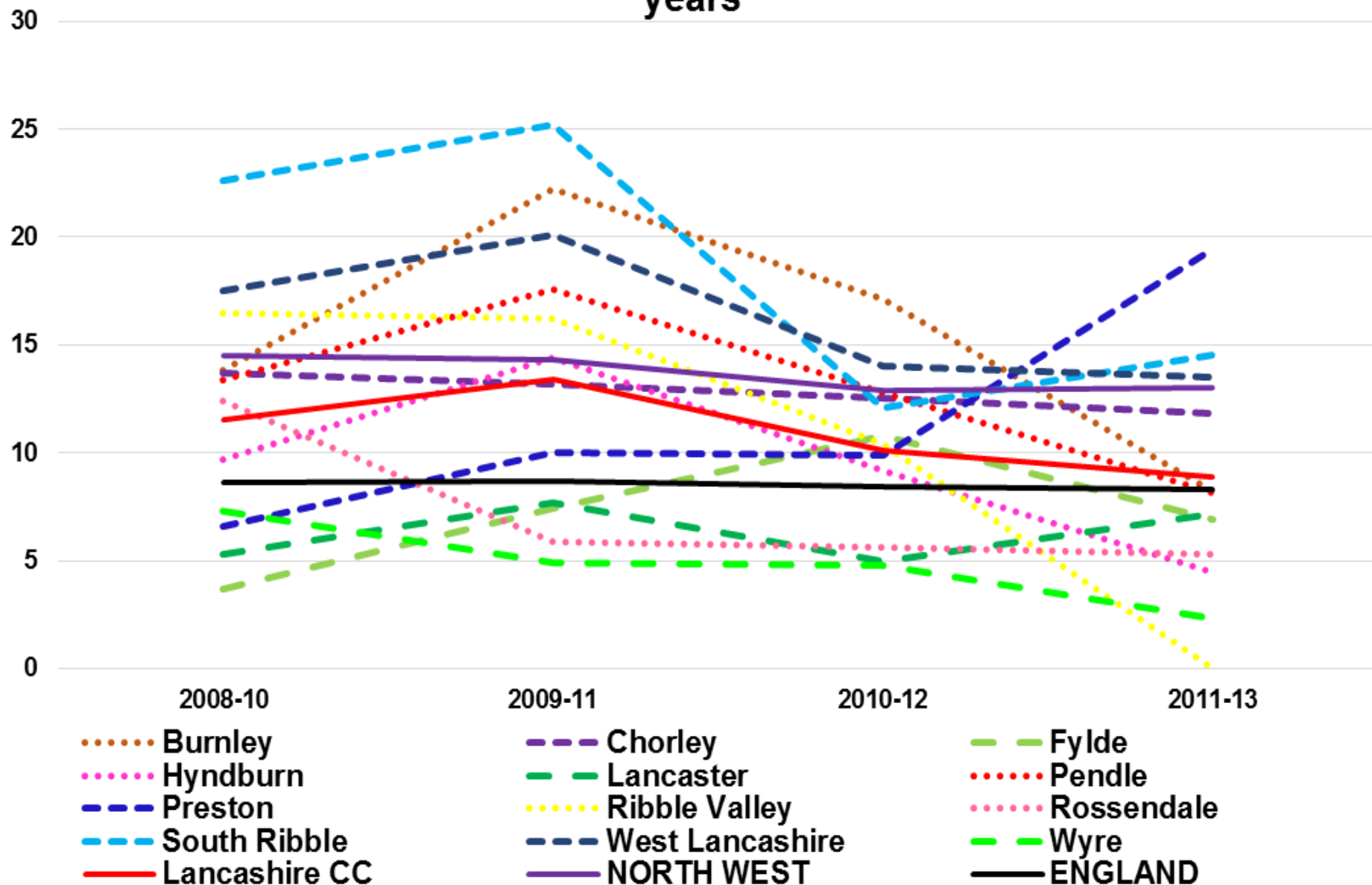
Trend in emergency hospital admissions for injuries due to falls in people aged 65 years and over, rate per 100,000 (North)



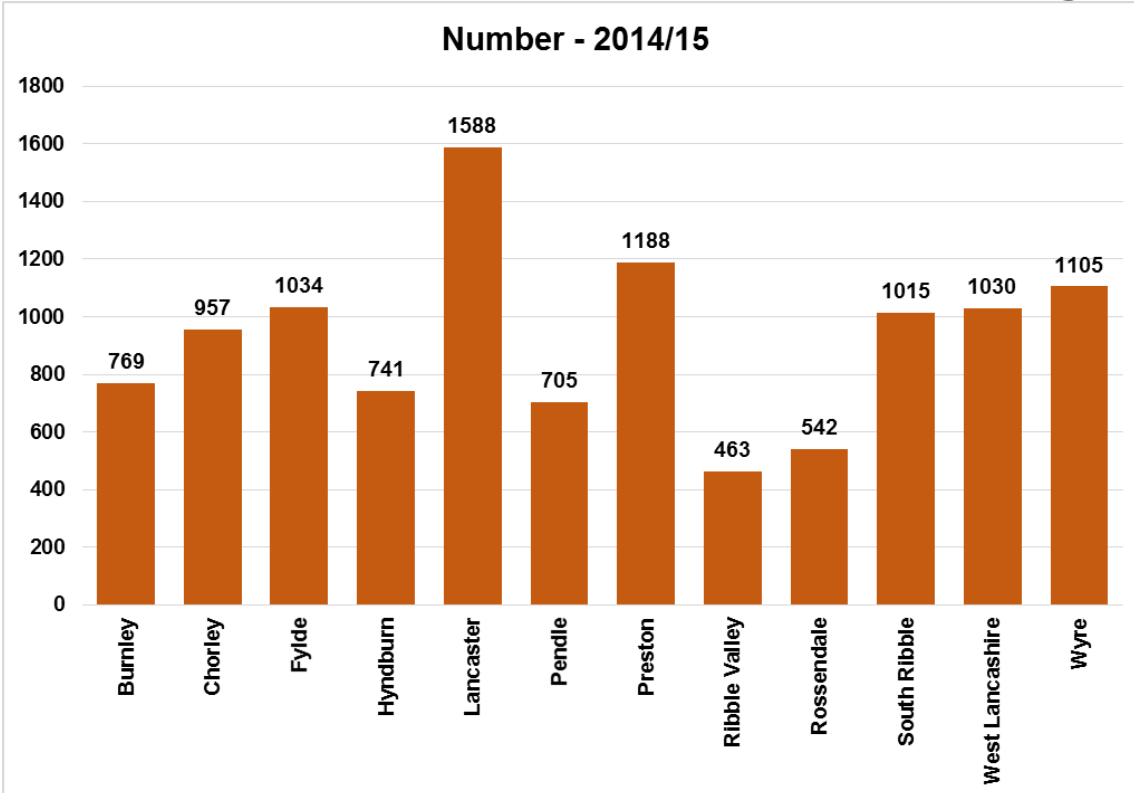
Source: PHOF



Mortality from accidental falls, rate per 100,000 - ages 65-74 years



Ambulance call-outs for falls in persons aged 65 years and over (2014/15)



- **15,581** ambulance call-outs for falls
- **11,137 (71%)** 65+ population

- ❖ **Lancaster & Preston: 58 falls call-outs per 1000 65+ population**
- ❖ **Lancashire average: 48 falls call-outs per 1000 65+ population**

